



The Firelands Express



AUGUST 18, 2014

VOLUME 1 ISSUE 77



FROM THE SUPERINTENDENT

TO YOUR CHILDS LETTER FOR START DATE)

THE FIRST DAY OF SCHOOL FOR KINDERGARTEN IS AUGUST 29 (STAGGERED START: PLEASE REFER TO YOUR CHILDS LETTER FOR START DATE)

VISION 2015-V

Vision 2015 is the continuous improvement document that leads the Firelands Local School District. The 2014-2015 school year marks the sixth and final year of the current Vision 2015 document that establishes a continuous improvement plan for the District. Each year the plan is reviewed and revised based on the school's testing data and input from residents, teachers, students, and administration. The final planning process for the document will occur in mid-August. Vision 2015 is accessible in full at www.firelandsschools.org. The document is located in the drop-down "About the District" menu located at the top of the home page. I encourage you to review the entire document. Please find a brief review of our 2014-2015 goals below:

STUDENT ACHIEVEMENT

Continue Implementation of "Firelands Framework for Effective Instruction"

Over the past several years, the District worked collaboratively to develop a comprehensive model to guide instructional improvement in the classroom. We will continue to implement the framework based on the work of Dr. Robert Marzano. The implementation includes the use of common assessments and professional development targeted to address data-driven district instructional goals. In addition, the administrative staff will improve the observation/evaluation process in conjunction with the Ohio Teacher and Principal Evaluation Process (OTPEP).

Full implementation of the New State Standards

The District begins the first year of full implementation of new state education standards introduced by the Ohio Department of Education during the 2012-2013 school year.

TECHNOLOGY

Develop and Implement the District's Technology Plan (Year 3)

The District continues to implement a technology plan that meets the needs of a 21st Century Educational Environment, as well as improving efficiency in operations. The plan includes a replacement/life cycle for technology, installation of a district-wide phone system with classroom phones to improve safety and communication, and maintenance and utilization of a wireless infrastructure.

Implementation of a "Bring Your Own Technology" (BYOT)

The District begins year one (1) of a sustainable, efficient, and effective BYOT program.

FINANCE

Continue the Plan to Assure Expenditures Do Not Exceed Revenue

The District will continue to review all expenditures to ensure efficiency and fiscal responsibility.

Maintain a Budget Process That Links Expenditures to District Goals and Initiatives

The District will continue to link all expenditures to goals and initiatives that focus on efficiency and student learning and growth.

Improve Application of Technology to BOE/District Processes

The District will continue to explore efficient operations and best practices in terms

of the use of resources.

FACILITIES

Implement Year Four of the Facility/Maintenance Plan

The District will plan and prioritize projects based on funding and necessity, a task that grows increasingly difficult with aging facilities.

Evaluate facility safety as associated with 21st century learning concepts.

The District will explore current best practices for student and building safety, including analysis of the sustainability of current facilities from a cost-benefit perspective, as well as viable options of potential facility improvements including, but not limited to new construction that creates one educational campus.

CONNECTIONS

Improve Communication

The District will continue with the use of a community blog and various social media platforms to engage public stakeholders in the school system.

Engage community partners in the education process.

The District will continue to explore opportunities to collaborate with key stakeholders in the community to improve student learning.

We are very proud of our students, teachers, classified staff members, and schools! I encourage you to become involved in the education of our community's youth. We cannot do it alone and the Firelands Schools has a place for everyone!

Go Falcons!

Yours in Education,

Dr. Robert F. Hill
Superintendent

STATE REPORT CARD RELEASE

In early August, the Ohio Department of Education will officially release district ratings and test scores based on last spring's testing. My article next month will focus on our report card results.

START OF SCHOOL

Our custodial staff was busy again this summer improving our school facilities. I invite you to stop by and observe the finished product at our Open House (see details below). We salute our custodial staff for their hard work in maintaining the excellent appearance of our district facilities!

OPEN HOUSE – AUGUST 25 FOR ALL BUILDINGS

High School: 4:30-5:15: 9th grade orientation/open house
5:00-5:45: Grades 10-12

Elementary: 5:30-6:15: Grades K-2
6:30-7:15: Grades 3-5

Middle School: 7:30-8:15: Grades 6-8

THE FIRST DAY OF SCHOOL IS AUGUST 27 (Grades 1-12)

THE FIRST DAY OF SCHOOL FOR KINDERGARTEN IS AUGUST 28 (STAGGERED START: PLEASE REFER

You may view this issue online at:
www.firelandsschools.org

The Communities we serve: Amherst, Amherst Twp, Birmingham, Brownhelm Twp, Camden Twp, Florence Twp, Henrietta Twp, Kipton Village, New Russia Twp, South Amherst Village, Vermilion and Vermilion Twp.

NONPROFIT ORG.
U.S. POSTAGE PAID
AMHERST, OH

PERMIT NO. 117
POSTAL PATRON



2014 - 2015 VARIANCE FORM POLICY



As the school year approaches, many of you will be making day care arrangements for your children. **PLEASE KEEP THE FOLLOWING PROCEDURE IN MIND TO HELP INSURE THE SAFETY OF THE CHILDREN.** Remember, pick up and drop off locations at the child's home address is always best, but we realize, it is not always possible. When a change for pick up or drop off is necessary, we are asking you to adhere to the following procedure: **PLEASE HAVE ALL FORMS TURNED IN BY AUGUST 20, 2014 TO BE EFFECTIVE BY THE FIRST DAY OF SCHOOL.**

IMPORTANT!! Variance forms are available at the elementary and middle school offices, and can also be printed from our school website under the forms and links tab, K-12 Bus Variance Forms. [http://www.firelandsschools.org/Downloads/Variance%20Form%20K-12%20\(2009\)2-2.pdf](http://www.firelandsschools.org/Downloads/Variance%20Form%20K-12%20(2009)2-2.pdf)
These forms are designed for permanent or steady route changes.

WITH THE SAFETY OF YOUR CHILD IN MIND, VARIABLE AND ALTERNATING DAYS WILL NOT BE ALLOWED

PLEASE HAVE VARIANCE FORMS COMPLETED AND TURNED INTO THE SCHOOL OR BUS GARAGE **5 DAYS** PRIOR TO THE EFFECTIVE DATES, SO EVERYONE INVOLVED MAY HAVE PROPER NOTICE OF THE CHANGE. WE ASK THAT THE CHANGE BE IN EFFECT FOR THE ENTIRE YEAR. THE CHANGE MUST BE WITHIN AN EXISTING ROUTE! **YOU MUST FILL OUT A NEW FORM EACH SCHOOL YEAR.** IF YOU HAVE AN EMERGENCY THAT ARISES DURING THE DAY AND YOU NEED TO CHANGE THE PLANS YOU HAVE MADE, CALL THE FIRELANDS ELEMENTARY OFFICE AT **440-965-5381 BEFORE 12:30 P.M.** TO NOTIFY THEM OF THE CHANGE. THEY WILL GET A MESSAGE TO YOUR CHILD'S TEACHER, TO INSURE THAT YOUR CHILD IS DROPPED OFF AS PER YOUR INSTRUCTION.

CONSISTENCY IS THE KEY!

2014 – 2015 FIRELANDS BUS ROUTES

As we start the new school year we have two detours that will be affecting a few of our routes. First, North Ridge / Vermilion Road, around the rim of Mill Hollow is currently closed and will be until the construction project is completed in late October, second, Quarry Road north of Route 113. It will be closing August 18th for approximately thirty days, opening around the eighteenth of September.

Students that do not ride the bus to school on the first day will need to check with their teacher or the office to find the correct bus number to ride home in the afternoon. **Please do not assume that they ride the same bus home as last year.** You will find the A.M. routes listed by township, bus driver, drivers name and tentative bus number. If the Bus that arrives at your house is different than what is published, the driver will instruct the students of the proper number. **Please remember these times are approximate and may vary especially the first week or two of school.** We ask that you have your child ready ahead of time, and wait for the bus in a safe location, approximately 10 feet from the road. There will continue to be an emphasis on designated place of safety both before and after school. Even students on the right hand side need to stay back away from the edge of the road and wait until the bus driver signals them before students approach the bus. For those who need to cross the road, please wait for the drivers hand signal before crossing and check traffic on your own.

All Firelands students in grades 6 - 12 will be transported on the High School/Middle School Routes and grades K - 5 will be transported on the elementary routes; St. Joe's students will be transported on our High School/Middle School routes A.M. and P.M., Open Door and Summit Academy students will be transported on A.M. High School routes and P.M. will be on their own route.

All of the information listed here, as well as the P.M. routes will be available on the Firelands Website: <http://www.firelandsschools.org>, under the Central Office tab / Transportation along with the variance form procedure and a printable variance form for your convenience. Post cards will be sent out approximately one week before school with bus numbers and times to alleviate phone calls.

High School - A.M. Bus #15 (Bus # could change) Driver – Mrs. Saylor (Brownhelm Township)

Depart Storage, (Stops begin 6:30 A.M., on Baumhart Rd.), North on Baumhart Rd. to North Ridge, west on North Ridge to Claus, north on Claus to Brownhelm Station, west on Brownhelm Station to T.A. (2480), east on Brownhelm Station to Claus, south on Claus to Jerusalem, west on Jerusalem to Sunnyside, south on Sunnyside to Cooper Foster Park, east on Cooper Foster to Baumhart, south on Baumhart to North Ridge, west on North Ridge to Claus, south on Claus to Middle Ridge, west on Middle Ridge to Vermilion Rd, south on Vermilion Rd. to Firelands High School.

Elementary - A.M. Bus #15 (Bus # could change) Driver - Mrs. Saylor (South Amherst)

Upon return from Elyria, west on 113, pick up at Trailer Park, **Approximately 8:00A.M.** In the front behind office, west on Route 113 to North Lake St., north on North Lake St. to Maroy, east on Maroy to Thompson, south on Thompson to Oakdale, east on Oakdale to T.A. (Cul-de-sac), west on Oakdale to Thompson, north on Thompson to Maroy, west on Maroy to North Lake, south on North Lake to Route 113, west on Route 113 to Vermilion Rd., south on Vermilion Rd. to Firelands Elementary School.

High School - A.M. Bus #19 Driver - Mrs. Horning (Brownhelm Township)

Depart Storage 6:25 A.M. High School starts at Highbridge Rd. and Vermilion Rd., (Stops begin at 6:38 A.M.), north on Highbridge to Brownhelm Station, east on Brownhelm Station to Vermilion, north on Vermilion to Tomahawk, east on Tomahawk to Arrowhead, south on Arrowhead to Brownhelm Station, east on Brownhelm Station to Sunnyside, south on Sunnyside to Jerusalem, west on Jerusalem to Vermilion, south on Vermilion to Cooper Foster, east on Cooper Foster to Sunnyside, south on Sunnyside to North Ridge, west on North Ridge to Vermilion, south on Vermilion Rd. to Gifford Rd., South on Gifford to State Route 113, west on State Route 113 to Vermilion Rd., south on Vermilion to Firelands High School.

Elementary - A.M. Bus #19 Driver – Mrs. Horning

From Route 113, North on Baumhart to Cooper Foster, (Stops begin at 7:40 A.M.), west on Cooper Foster Park to Claus, north on Claus to T.A. (Arndt Rd.), south on Claus to Jerusalem, west on Jerusalem to Vermilion, south on Vermilion to Cooper Foster, east on Cooper Foster to Claus, south on Claus to North Ridge, west on North Ridge to Claus, south on Claus to Middle Ridge, west on Middle Ridge to Vermilion Rd., south on Vermilion Rd. to Portman Rd., west on Portman to White Tail Run, north on White Tail Run to Grand Oak Drive, south on Grand Oak Dr. to Portman, south on Gore Orphanage to Route 113, east on Route 113 to Vermilion Rd., south on Vermilion to Firelands Elementary School.

High School - A.M. Bus #23 Driver – Mrs. DeWitt (Brownhelm Township)

Depart Storage 6:36 A.M., North on Baumhart to North Ridge, east on North Ridge to T.A. (Township Line), west on North Ridge to Rice Rd., southeast on Rice to Heritage Way, north on Heritage Way to turnaround (second T.A. on right), south on Heritage Way to Rice Rd., east on Rice to the alley, Cut through Alley to Middle Ridge, west on Middle Ridge to Greystone, north on Greystone to T.A. (cul-de-sac), south on Greystone to Middle Ridge, west on Middle Ridge to Vermilion Rd., south on Vermilion Rd. to Firelands High School.

Elementary - A.M. Bus #23 Driver - Mrs. DeWitt

(Stops begin 7:45 A.M. on Rice Road), north on Pyle Rd. to Middle Ridge, west on Middle Ridge to Quarry, cross Quarry to Rice, west on Rice Rd. to Heritage Way, north on Heritage Way to Turnaround (second T.A. on Heritage Way), south on Heritage Way to Rice Rd, west on Rice Rd. to North Ridge, east on North Ridge to T.A. (48540), west on North Ridge to Baumhart, south on Baumhart to Middle Ridge, west on Middle Ridge to Greystone Drive, follow Greystone Drive around to Middle Ridge Rd., west on Middle Ridge to Vermilion Rd., south on Vermilion Rd. to Firelands Elementary School.

High School - A.M. Bus #8 Driver - Mrs. Holowenko (Brownhelm Township)

Depart Storage 6:20 A.M., **(Stops begin on North Ridge west of Mill Hollow - 6:30 A.M.)**, east on North Ridge Rd. to T.A. (Trinter Road), east on North Ridge to Gore Orphanage Rd., north on Gore Orphanage to turnaround (8066), south on Gore Orphanage to Morse Rd., northeast on Morse to Banks Rd., south on Banks to turnaround (Leimbach's Potato Barn), north on Banks to North Ridge, east on North Ridge to Vermilion Rd., north on Vermilion to Cooper Foster Park Rd., east on Cooper Foster to Claus Rd., south on Claus to North Ridge, west on North Ridge to Vermilion Rd., south on Vermilion Rd. to Firelands High School.

Elementary - A.M. Bus #8 Driver - Mrs. Holowenko

(Stops begin 7:40 A.M. on Gore Orphanage Rd.), north on Vermilion Rd. to North Ridge, east on North Ridge to Sunnyside, north on Sunnyside to Cooper Foster, west on Cooper Foster to Vermilion, south on Vermilion to North Ridge, west on North Ridge to Gore Orphanage Rd, north on Gore Orphanage to T.A. (8066 Gore Orphanage Rd.), south on Gore Orphanage to T.A. (Morse Rd.), north on Gore Orphanage to North Ridge, east on North Ridge to Vermilion Rd., north on Vermilion Rd. to Tomahawk Lane, east on Tomahawk to Arrowhead, south on Arrowhead to Brownhelm Station, east on Brownhelm Station to Sunnyside, south on Sunnyside to North Ridge, east on North Ridge to T.A.(2965), west on North Ridge to Vermilion, south on Vermilion to Gifford Rd., south on Gifford to State Route 113, west on State Route 113 to Vermilion Rd., south on Vermilion to Firelands Elementary School.

High School - A.M. Bus #14 Driver - Mrs. Grills (Camden Township)

Depart storage 6:30 A.M., **(Stops begin at 6:35 A.M. on Route 511)**, north on Gifford to Bronson, west on Bronson to State Route 511, south on Route 511 to Austin Rd, east on Austin to T.A. (48780), west on Austin to Rowell, north on Rowell to Route 303, east on Route 303 to T.A. (48612), west on Route 303 to Gifford, north on Gifford to Route 20, continue on Gifford Rd. to Garfield Rd., west on Garfield Rd. to Vermilion Rd., north on Vermilion Rd. to Firelands High School.

Elementary - A.M. Bus #14 Driver – Mrs. Grills

South on Vermilion Rd. to Route 511, south on Route 511 to Route 20, continue south on Route 511 to Route 303, **(1st stop - 7:35 A.M. on Route 303)**, east on Route 303 to Gifford Rd., south on Gifford to Austin, west on Austin Rd. to State Route 511, north on Route 511 to Bronson Rd., east on Bronson to Gifford Rd., south on Gifford to Austin Rd., east on Austin to turnaround (48780), west on Austin to Rowell Rd., north on Rowell to State Route 303, east on Route 303 to turnaround (48612), west on Route 303 to Gifford Rd, north on Gifford to Garfield, west on Garfield to Vermilion Rd., north on Vermilion Rd. to Firelands Elementary School.

High School - A.M. Bus #5 Driver – Mrs. Claubagh (Camden Township)

Depart storage 6:20 A.M., South on Vermilion to Haigh St., west on Haigh to Baird, **(Stops begin 6:30 A.M.)**, north on Baird to Bates, west on Bates to Gore Orphanage, south on Gore Orphanage to State Route 20, west on State Route 20 to State Route 511, south on Route 511 to State Route 303, east on Route 303 to Gifford, south on Gifford to Bronson, west on Bronson to Route 511, south on Route 511 to Betts, west on Betts to Baird Rd., north on Baird to Becker, west on Becker to T.A. (5), east on Becker to Baird, north on Baird to Garfield, east on Garfield to Vermilion Rd., north on Vermilion Rd. to Firelands High School.

Elementary - A.M. Bus #5 Driver – Mrs. Claubagh

North on Vermilion Rd. to Route 113, west on Route 113 to Green Rd., south on Green Rd. to Clary, southwest on Clary to Garfield, west on Garfield to Route 60, **(Stops will begin approximately 7:35 A.M. on Garfield Rd.)**, south on Route 60 to West, west on West Rd. to T.A. **(13116)**, north on West Rd. to State Route 60, south on Route 60 to T.A. (10715- Ornter's), north on Route 60 to Butler, south on Butler to Denman, east on Denman to Green, north on Green to Clary, southwest on Clary to Garfield, east on Garfield to Green, south on Green to Ward, southeast on Ward to Gore Orphanage, south on Gore Orphanage to Becker Rd., east on Becker to Baird, north on Baird to State Route 113, east on Route 113 to Vermilion Rd., south on Vermilion Rd. to Firelands Elementary School.

High School - A.M. Bus #29 Driver - Mrs. Thomas (Camden/Henrietta Township)

Depart storage 6:30 A.M. **(Stops begin 6:32 A.M.)** east on State Route 511 to T.A. (Gifford Rd.), west on State Route 511 to Haigh St., west on Haigh to Hawkins St., south on Hawkins to Rosa St., west on Rosa to West St., south on West to Church, east on Church to Route 511, south on Route 511 to Route 20, east on Route 20 to Plate Rd., east on Plate to Baumhart Rd., north on Baumhart to Garfield Rd., east on Garfield to T.A. (48604), west on Garfield to Baumhart, south on Baumhart to Garfield, west on Garfield to Gifford, north on Gifford to State Route 113, west on Route 113 to Vermilion Rd., south on Vermilion Rd. to Firelands High School.

Elementary - A.M. Bus #29 Driver - Mrs. Thomas

(Stops begin 7:40 A.M. at Russia Rd.) West on Route 113 to Quarry Rd., south on Quarry to Russia, west on Russia to Baumhart Rd., south on Baumhart to Garfield, east on Garfield to T.A. (48604), west on Garfield to Baumhart, south on Baumhart to Plate Rd., cross Route 20, continue on Plate Rd. to Route 20, west on Route 20 to Baird Rd., north on Baird to Bates, east on Bates to Green Rd., north on Green to T.A. (Lincoln Rd.), south on Green to State Route 20, east on Route 20 to Gore Orphanage, south on Gore Orphanage to T.A. (15780), north on Gore Orphanage to Route 20, east on Route 20 to Gore Orphanage, north on Gore Orphanage to Bates, east on Bates to Baird, north on Baird to Becker Rd., east on Becker to Route 511, east on Route 511 to Gifford, north on Gifford to Garfield, west on Garfield to Vermilion, north on Vermilion Rd. to Firelands Elementary School.

High School - A.M. Bus #20 Driver - Mrs. Huffman (Bus number could change) (Camden / Henrietta Township)

Depart storage at 6:30 A.M. **(Stops begin 6:30 A.M.)** east on Route 303 to north Gore Orphanage Rd., T.A. at Gore Orphanage Rd., west on Route 303 to Gore Orphanage, south on Gore Orphanage to T.A. (19477), north on Gore Orphanage to Betts Rd., east on Betts to Baird Road, south on Baird to T.A. (18966), north on Baird to Betts, east on Betts to Route 511, north on Route 511 to Route 303, west on Route 303 to Gore Orphanage, north on Gore Orphanage to State Route 20, west on State Route 20 to Green Rd., north on Green to Bates Rd., east on Bates to Baird, north on Baird to Becker Rd., east on Becker to Vermilion Rd., north on Vermilion Rd. to Firelands High School.

Elementary - A.M. Bus #20 Driver - Mrs. Huffman (Bus number could change)

South on Vermilion Rd. to Route 511, south on Route 511 to Betts, **(Stops begin on Route 511 - 7:40 A.M.)**, west on Betts to Baird, south on Baird to T.A. (18966 – Linn's), north on Baird to Betts, west on Betts to Gore Orphanage, south on Gore Orphanage to T.A. (19477-Bacsi's), north on Gore Orphanage to Route 303, east on Route 303 to T.A. (Township Hall), west on Route 303 to Baird Rd., north on Baird to Haigh, east on Haigh to Route 511, south on Route 511 to Church, west on Church to Hawkins, north on Hawkins to Rosa, west on Rosa to West, south on West to Church, east on Church to Route 511, north on Route 511 to Vermilion, north on Vermilion Rd. to Firelands Elementary School.

High School - A.M. Bus #18 Driver – Mrs. Crawford (Florence Township)

Depart storage 6:30 A.M. **(Stops begin in Florence at 6:31 A.M.)** north on Florence Wakeman to State Route 113, west on Route 113 to T.A. (10809 Ward's), east on Route 113 to Joppa, north on Joppa to Angling, northeast on Angling to Harrison, south on Harrison to Route 113, east on Route 113 to Route 60, north on Route 60 to T.A. (5204), south on Route 60 to Route 113, east on Route 113 to Vermilion Rd., south on Vermilion Rd. to Firelands High School.

Elementary - A.M. Bus #18 Driver – Mrs. Crawford

West on Route 113 to State Route 60, north on Route 60 to T.A. (5204), **(Stops begin 7:35 A.M.)**, south on Route 60 to Route 113, west on Route 113 to Harrison Rd., north on Harrison to Angling, south on Angling to Joppa, south on Joppa to State Route 113, west on Route 113 to Cable, south on Cable to Harmon Rd., east on Harmon to Florence Wakeman Rd., south on Florence Wakeman to T.A. (14316), north on Florence Wakeman to Garfield Rd., east on Garfield to State Route 60, north on Route 60 to South St., east on South St. to Chapel St., north on Chapel to State Route 113, east on Route 113 to Vermilion Rd., south on Vermilion Rd. to Firelands Elementary School.

High School - A.M. Bus #17 Driver – Mrs. Saylor (Florence Township)

From West Rd., west on Harmon to Florence Wakeman, north on Florence Wakeman to State Route 113, west on Route 113 to Main, **(Stops begin on Main Rd. at 6:30 A.M.)**, west on Main to Fraley Rd., north on Fraley to Thorpe Rd., east on Thorpe to Stephens Rd., north on Stephens to Mason, west on Mason to Burrows, northeast on Burrows to T.A. (10710), west on Burrows to Mason, east on Mason to T.A. (11817), west on Mason to Joppa, north on Joppa to Furnace, northeast on Furnace to T.A. (High tension lines), south on Furnace to Joppa, north on Joppa to T.A. (Nuhn's Farm), south on Joppa to Church, west on Church to T.A. (10217), east on Church to Joppa, south on Joppa to Route 113, east on Route 113 to Vermilion Rd., south on Vermilion Rd. to Firelands High School.

Elementary - A.M. Bus #17 Driver – Mrs. Saylor

West on Route 113 to Main, **(First Stop on Main Rd. at 7:40 A.M.)**, west on Main to Frailey, north on Frailey to Thorpe, east on Thorpe to Stephens, north on Stephens to Mason, west on Mason to Burrows Rd., northeast on Burrows to T.A. (10710), west on Burrows to Mason, west on Mason to Frailey, north on Frailey to Church, east on Church to Joppa, south on Joppa to Route 113, cross Route 113, south on Florence Wakeman to T.A. (Division St.), north on Florence Wakeman to Route 113, east on Route 113 to Vermilion Rd., south on Vermilion Rd. to Firelands Elementary School.

High School - A.M. Bus #24 Driver - Mr. Saylor (Florence Township)

Depart storage 6:30 A.M. East on West Rd. to T.A. **(11207)**, southwest on West to Burns Rd., west on Burns to Florence Wakeman, north on Florence Wakeman to Harmon, west on Harmon to T.A. (14907), east on Harmon to Florence Wakeman, north on Florence Wakeman to Garfield, east on Garfield to Route 60, north on Route 60 to South St., east on South St. to Chapel, north on Chapel to Route 113, east on Route 113 to Dean Rd., north on Dean Rd. to T.A. (Whispering Winds), south on Dean Rd. to Route 113, east on Route 113 to Vermilion Rd., south on Vermilion Rd. to Firelands High School.

High School - A.M. Bus #21 Driver – Mrs. Grude (Florence Township)

West on Becker to Gore Orphanage, north on Gore Orphanage to Ward, **(Stops begin on Gore Orphanage at 6:35 A.M.)**, northwest on Ward to Green, south on Green to Denman, west on Denman to Butler, south on Butler to T.A. (14202), north on Butler to Denman, west on Denman to Route 60, south on Route 60 to T.A. (10715) north on Route 60 to Denman, east on Denman to Butler, north on Butler to Route 60, north on Route 60 to Garfield, east on Garfield to Green, north on Green to Route 113, east on Route 113 to Vermilion Rd., south on Vermilion to Firelands High School.

High School - A.M. Bus #6 Driver – Mrs. Bates (Henrietta Township)

Depart storage at 6:30 A.M. **(Stops begin at 6:35 A.M. on Baird Rd.)** north on Green Rd. to Garfield, east on Garfield to Baird, north on Baird to State Route 113, east on State Route 113 to Vermilion Rd., north on Vermilion Rd. to Portman Rd., west on Portman Rd. to Gore Orphanage, south on Gore Orphanage to State Route 113, cross Route 113, south on Gore Orphanage to Ward, northwest on Ward to Green Rd., north on Green to Garfield, east on Garfield to Baird Rd., south on Baird to Garfield, east on Garfield to Vermilion Rd., north on Vermilion Rd. to Firelands High School.

High School - A.M. Bus #2 Driver – Mrs. Saltis (South Amherst)

Depart storage 6:35 A.M., From State Route 113, South on South Lake St. to Russia Rd., **(Stops begin 6:40 A.M.)**, east on Russia Rd. to Annis Rd., north on Annis to Route 113, east on Route 113 to Trailer Park, Turnaround (2nd street on right inside the park), west on Route 113 to Main St., (with stops at Kenwood and Vivian), west on Route 113 to S.A.M.S. Pull into S.A.M.S., drop off 6 - 8 Grades, west on Route 113 to Vermilion Rd., south on Vermilion Rd. to Firelands High School. (This Bus will go to the JVS and drop off before starting the Elementary route).

Elementary - A.M. Bus #2 Driver – Mrs. Saltis

From Route 58, west on Butternut Ridge to end of road (Pyle South Amherst Rd.), north on Pyle Road/Garfield Rd. around curve to stop sign, north on Pyle Rd. to Russia Rd., **(Stops begin – 7:50 A.M. on Pyle Rd.)**, East on Russia Rd. to Annis Rd. north on Annis to Route 113, west on Route 113 to Vermilion Rd., (with stops at Kenwood, Vivian, W. Main St. and E. Main St.), south on Vermilion Rd. to Firelands Elementary School.

High School - A.M. Bus #11 Driver - Mrs. Coultrip (South Amherst)

Depart storage 6:35 A.M. East on Route 113 to Leonard Street, **(First stop 6:38 A.M. on Leonard St.)**, south on Leonard St. (Quarry) to Russia Rd., east on Russia to South Lake St., north on South Lake to Route 113, cross Route 113 to North Lake St., north on North Lake to Maroy, east on Maroy to Thompson, south on Thompson to Oakdale, Turnaround at Oakdale, north on Thompson to Maroy, west on Maroy to Pyle, south on Pyle/North Lake St. to Route 113, west on Route 113 to S.A.M.S., pull into S.A.M.S. Unload Grades 6-8 back door, west on Route 113 to Vermilion Rd., south on Vermilion to Firelands High School.

Elementary - A.M. Bus #11 Driver – Mrs. Coultrip

(Stops will begin -7:35 A.M.) South on South Lake to Russia, west on Russia to Quarry, north on Quarry to Elm, east on Elm to Maple, north on Maple to Route 113, west on Route 113 to Baumhart Rd., south on Baumhart to Garfield Rd., west on Garfield to Gifford, north on Gifford to Route 113, west on Route 113 to Vermilion Rd., south on Vermilion Rd. to Firelands Elementary School.

High School - A.M. Bus #1 Driver – Mr. Palmer (South Amherst)

From Quarry Road, east on Middle Ridge Rd. to T.A. (Pyle Rd.), **(Stops begin at Pinecrest Apts. 6:35 A.M.)**, west on Middle Ridge to Pinecrest Apts., west on Middle Ridge to Cooper's Run, north on Cooper's run to Redtailed Lane, right on Redtailed Lane to Cooper's Run, east on Cooper's Run to South Lake St., south on South Lake to Middle Ridge, west on Middle Ridge to Quarry Rd., north on Quarry Rd. to T.A. (7625), south on Quarry to T.A. (Hornyak St.), north on Quarry to Middle Ridge, east on Middle Ridge to Pyle, south on Pyle to S.A.M.S., Drop off Grades 6 - 8, west on Route 113 to Vermilion Rd., south on Vermilion Rd. to Firelands High School.

Elementary - A.M. Bus #1 Driver – Mr. Palmer

Leave S.A.M.S. at 7:50 A.M., north on North Lake to Middle Ridge, **(Stops will begin after Maroy at 7:55 A.M.)**, west on Middle Ridge to Pinecrest, west on Middle Ridge to Cooper's Run, north on Cooper's Run to Redtailed Ln., East on Redtailed to Cooper's Run, east on Cooper's Run to South Lake St., south on South Lake to Middle Ridge, west on Middle Ridge to Quarry, north on Quarry to T.A. (Rice Ct.), south on Quarry to T.A. (Hornyak St.), north on Quarry to Middle Ridge, west on Middle Ridge to Baumhart, south on Baumhart to Route 113, west on Route 113 to Vermilion Rd., south on Vermilion Rd. Firelands Elementary School.

STARTING DATES:

- 8-20-14 – Open Door
- 8-20-14 - St. Joe's
- 8-21-14 – Pep Willow Creek
- 8-25-14 - LCJVS (Seniors & Juniors)
- 8-27-14 – Firelands
- 8-27-14 – Summit Academy
- 8-28-14 – Kindergarten (Refer to letter)
- 8-29-14 - Kindergarten (Refer to letter)

OUT OF DISTRICT TRANSFER BUSES FOR THIS YEAR WILL BE:

- Open Door, - Bus #15 AM - Bus #1 PM
- JVS - Bus #2 AM & PM
- St. Joe's - Bus #6 AM - Bus #TBA PM
- Summit Academy and Spectrum - Bus #6 AM - Bus #6 PM

If your child's School begins before **August 27, 2014**, and will need transportation, you will need to call **Mr. Saylor at 965-4105** to make arrangements.

IF YOU HAVE ANY QUESTIONS, FEEL FREE TO CALL ME!

Our Drivers do an awesome job keeping our Students safe!
We are all looking forward to another safe school year.

As schools across the area will be starting back up soon, please remember to observe all laws pertaining to School Buses and their Red Lights. It takes everyone practicing safe driving habits to ensure a safe school year.

SCHOOL FEES

FHS FEES

SAMS FEES

GENERAL FEES

- Duplicating/Tech Fee - \$10.00
- Student Handbook - \$5.00
- TOTAL - \$15.00**

ARTS DEPARTMENT

- Advanced Art - \$40.00
- Art 1A - \$15.00
- Art 1B - \$15.00
- Art II - \$40.00
- Art III - \$40.00
- Art IV - \$40.00
- Band - \$30.00

ENGLISH DEPARTMENT

- English I - \$12.00
- English II - \$12.00
- English III - \$12.00
- English IV - \$12.00
- Honors English I - \$12.00
- Honors English II - \$12.00
- English 9 - \$12.00
- English 10 - \$12.00
- English 11 - \$12.00

MATH DEPARTMENT

- AP Honors Calculus - \$90.00

SCIENCE DEPARTMENT

- Biology I - \$25.00
- Biology II - \$33.00
- Chemistry - \$36.00
- Physical Science - \$25.00
- Physics - \$36.00

SOCIAL STUDIES

- Honors US History - \$14.00
- US History - \$14.00

FAMILY CONSUMER

- Sports Nutrition I - \$10.00
- Sports Nutrition II - \$10.00
- Experience with Foods I - \$10.00
- Experience with Foods II - \$10.00
- Peers & Careers - \$17.00
- Independent Living II - \$7.00

AG SCIENCE

- Ag Science I - \$37.00
- Ag Science II - \$37.00
- Ag Science III - \$37.00
- Ag Science IV - \$37.00

SIXTH GRADE

- Workbooks (3) - \$40.00
- Art - \$11.00
- Work & Family - \$13.00
- Science Supplies - \$8.00
- Student Handbook - \$5.00
- Duplicating/Tech - \$10.00
- TOTAL - \$87.00**

SEVENTH GRADE

- Workbooks (3) - \$40.00
- Art - \$11.00
- Work & Family - \$13.00
- Science Supplies - \$8.00
- Student Handbook - \$5.00
- Duplicating/Tech - \$10.00
- TOTAL - \$87.00**

EIGHTH GRADE

- Workbooks (3) - \$40.00
- Art - \$11.00
- Work & Family - \$13.00
- Science Supplies - \$8.00
- Student Handbook - \$5.00
- Duplicating/Tech - \$10.00
- TOTAL - \$87.00**

EIGHTH GRADE

(ALGEBRA STUDENTS)

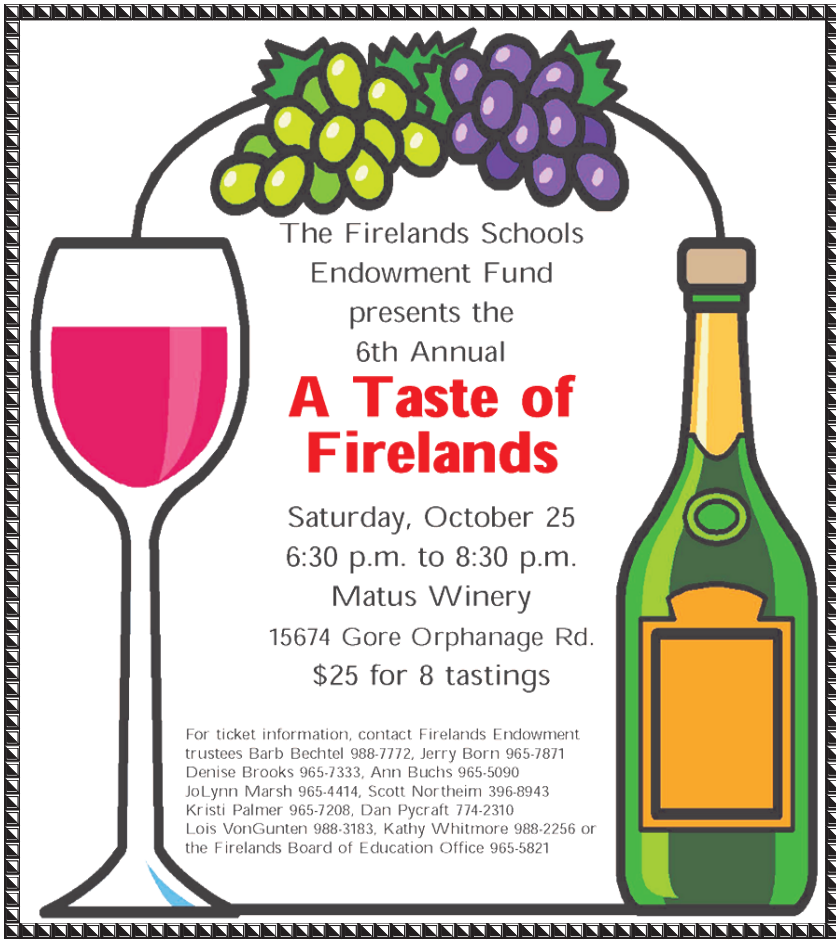
- Workbooks (3) - \$40.00
- Art - \$11.00
- Work & Family - \$13.00
- Science Supplies - \$8.00
- Student Handbook - \$5.00
- Duplicating/Tech - \$10.00
- TOTAL - \$87.00**

WORKBOOKS

- * Vocabu-Lit 6, 7, & 9
- * ELA Common Core Standards & Practice Grades 6, 7, & 8
- * Math Workbook 6, 7, & 8(8th grade Algebra students not included)

FES FEES

- Kindergarten - \$51.25
- First Grade - \$47.60
- Second Grade - \$46.90
- Third Grade - \$51.80
- Fourth Grade - \$53.00
- Fifth Grade - \$55.60



The Firelands Schools Endowment Fund presents the 6th Annual **A Taste of Firelands**

Saturday, October 25
6:30 p.m. to 8:30 p.m.
Matus Winery
15674 Gore Orphanage Rd.
\$25 for 8 tastings

For ticket information, contact Firelands Endowment trustees Barb Bechtel 988-7772, Jerry Born 965-7871, Denise Brooks 965-7333, Ann Buchs 965-5090, JoLynn Marsh 965-4414, Scott Norheim 396-8943, Kristi Palmer 965-7208, Dan Pycraft 774-2310, Lois VonGunten 988-3183, Kathy Whitmore 988-2256 or the Firelands Board of Education Office 965-5821

New for Next School Year – BYOD

Firelands Local Schools is proud to announce a new technology initiative for students starting next fall. Beginning the 2014 – 2015 school year, students at South Amherst Middle School and Firelands High School will be allowed to bring their electronic devices to school and use them as part of the District's BYOD program. BYOD (*Bring Your Own Device*) is centered on students using devices not owned by the district such as smartphones, tablets, eReaders, and laptops for educational use.

Firelands Local Schools worked with MCPc, Inc to upgrade the core network infrastructure and establish wall-to-wall wireless coverage in the buildings in the summer of 2013 in preparation to support the BYOD initiative. The belief is that with students bringing their own devices to school that it will promote an exciting shift in how they use them. Typically, student-owned devices are used for social or entertainment purposes, but with BYOD their use expands to also become collaboration and learning tools that can be used to engage the student with the content in hopes of promoting life-long learning habits.

KEY FACTS & GUIDELINES ABOUT THE FIRELANDS LOCAL SCHOOLS BYOD PROGRAM

- * **Do I need to purchase a device for my student?**
This initiative does not require the purchase of any device by our students or families. District devices will be available for students to meet curriculum and instructional expectations.
- * **Who is responsible for damage, loss, or theft of devices that students bring to school?**
Any device a student brings to school is their sole responsibility. Firelands Local Schools takes no responsibility to search for lost or stolen devices nor is there any assumption of financial responsibility by Firelands Schools for damaged, lost, or stolen personal devices.
- * **How will you monitor what my student is viewing on the Internet?**
Devices brought to school will only access the filtered, BYOD Wi-Fi network to prevent excess data fees to their personal accounts (no 3G, 4G, or mobile hotspot access will be permitted).
- * **When can my student use their device at school?**
Your student's teacher will determine when and how personal electronic devices may be used in his/her classroom. The student's electronic device must be turned off when not in use.
- * **Will my student need to have a signed form on file to use their device?**
Yes. In order for Firelands Local Schools to supervise student use of the district network and the Internet, the Acceptable Use Policy (AUP) must be read and the BYOD form must be signed by the student and guardians for all students who want to bring and use their own technology.

Please see the Firelands Schools web site for further information and any updates.

Fall "Pre-Season Tune Up" Session

The Falcon Wrestling Club will begin its first training session this fall! The club invites all K-12 athletes to gain an early edge for the upcoming season. Practices will take place on Tuesday and Thursday, at South Amherst Middle school, from September 9- October 23. Some practices will be moved to Wednesday due to parent teacher conferences. A calendar will be distributed at registration to clarify practice dates. Each practice will begin promptly at 4:30 and will end at 5:30, and will focus on the fundamentals. Registration will take place Monday, September 8 from 4:30 -5:30, at SAMS. Also, for your convenience, registration will be made available at both FHS football season opening home games- August 29 & September 5. The cost for this session is \$40. For more information please visit our website: <https://sites.google.com/site/firelandsfalconwrestling/> or contact Coach Malave with any questions: jmalave@firelandsschools.org



FHS to Open on Wednesday, August 27th

Firelands High School is excited that school is reopening on **Wednesday, August 27th**. Students and parents should check teacher's links through the Firelands website for materials lists for each class. Also, FHS will host **Open House on Monday, August 25th**. A Freshman Orientation meeting will be held in the FHS Gymnasium from 4:30 – 5:15 pm. This will cover many topics that will be important to the students and parents of the Class of 2018. Then, from 5-6 pm, students and parents are invited to tour the FHS building and meet with teachers, administrators and staff.

The FHS Main and Guidance Offices are now open. Hours are 7 am - 2:30 pm until the beginning of school. Once school begins, the office hours are from 7 am - 3:30 pm each day that school is in session.

FHS is gearing up for a great school year and excitement is building for a rewarding 2014-15 school year. We hope to see everyone at FHS for Open House on Monday, August 25th and anticipate a great first day on Wednesday, August 27th.

2014 MFMB - Holiday Craft Fair

Saturday, November 8th, 2014

General Admission \$2.00

9:00am-4:00pm

At South Amherst Middle School

152 West Main St.

South Amherst, Ohio 44001

Vendors Wanted!

Crafters, Direct Sales Reps, Artisans of any kind!

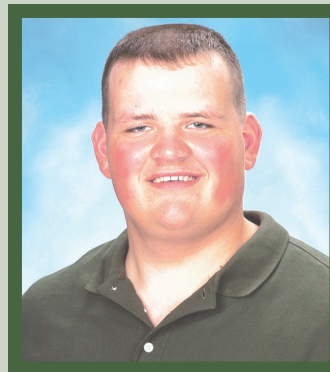
For More Details Please

Contact: Michele Reynolds: 440-610-0344

Laura Solnick: 440-935-0758

email firelandsbandboosters@gmail.com

FIRELANDS GRADUATE RECEIVES SILVER MEDAL



Joe Sosinski, 18, of Amherst, Ohio, has won 2nd Place-Silver medal at the SkillsUSA national championship competition in Diesel Equipment Technology. The SkillsUSA Championships, held in Kansas City, Mo., took place June 24-26, 2014, as part of the SkillsUSA 50th annual National Leadership and Skills Conference (NLSC), a showcase of career and technical education students. During the week, more than 6,000 outstanding

career and technical education students all state contest winners competed hands-on in 99 different trade, technical and leadership fields.

Joe is a 2014 graduate of Firelands High School/LCJVS. "We are very proud of Joe's accomplishments." He and the other students that participated in the Diesel Equipment Technology Competition, are true champions in their dedication to excellence in their trade and their leadership skills.

During the national competition, Joe and other students worked against the clock and each other, proving their expertise in occupations like electronics, computer-aided drafting, precision machining, medical assisting and culinary arts. All contests are run with the help of industry, trade associations, and labor organizations, and test competencies are set by industry. In addition, leadership contestants demonstrated their skills, which included extemporaneous speaking and conducting meetings by parliamentary procedure.

Diesel Equipment Technology contestants cycle through fourteen stations testing and troubleshooting engines, electrical and electronics systems, and power train systems, including chassis, transmissions and carriers. Contestants also demonstrate skills in hydraulic systems, vehicle inspections, fundamental failure analysis, brake systems, air-conditioning systems and general shop skills. Contestants also perform a job interview and complete a written test.

Top student winners received gold, silver and bronze medallions. Many also received prizes such as tools of their trade and/or scholarships to further their careers and education. The SkillsUSA Championships is for high school and college-level students who are members of SkillsUSA.

High scorers in the contests received Skill Point Certificates. The Skill Point Certificate was awarded in 86 occupational and leadership areas to SkillsUSA is a national partnership of students, teachers and industry, working together to ensure America has a skilled workforce. SkillsUSA chapters help students who are preparing for careers in technical, skilled and service occupations excel. SkillsUSA has more than 300,000 students and instructors as members.

For more information, visit www.SkillsUSA.org.

2014 - 2015 KDG - 8 SUPPLY LISTS

KINDERGARTEN

- * 1 - box (12) of #2 Pencils Sharpened
- * 2 - **STURDY** pocket folders w/horizontal pockets
- * 6 - glue sticks
- * 1 - Bookbag **WITHOUT** wheels and large enough to hold supplies, library books, and folders (bookbags with wheels do not fit in the lockers)
- * 2 - boxes of tissues
- * 2 - rolls of paper towels
- * 1 - Beach towel for rest time
- * 1 - 4 oz. bottle of Elmer's Glue-All (no gel glue)
- * 1 - container of Clorox wipes
- * 1 - box of gallon size Ziploc bags (BOYS)
- * 1 - box of sandwich size Ziploc baggies (GIRLS)
- * 1 - 1" hard cover/back 3 ring binder
- * 1 - Container of Wet Ones

FIRST GRADE

- * 3 - Containers of Clorox wipes
 - * 2 - Boxes of tissues
 - * 1 - Highlighter
 - * 1 - Roll of paper towels
 - * 1 - Pair of scissors
 - * 1 - Box of 16 or 24 crayons (every quarter)
 - * 3 - Pocket folders
 - * 1 - Small supply box
 - * 4 - Glue sticks (every quarter)
 - * 1 - Box of gallon size Ziploc baggies (BOYS)
 - * 1 - Box of quart size Ziploc baggies (GIRLS)
 - * 1 - Set of headphones in quart size bag w/ name clearly marked
 - * 1 - Art shirt
- Pencils everyday – as needed (at least 24 every quarter)

SECOND GRADE

- * 48 - **Sharpened** pencils
- * 2 - Large pink erasers
- * 1 - Package cap erasers
- * 2 - Pair of scissors
- * 20 - Glue sticks
- * 2 - Boxes of 24 crayons
- * 2 - Wide ruled composition notebooks (**1-BLACK & 1-RED**)
- * 1 - Box of sandwich bags (GIRLS)
- * 1 - Box gallon bags (BOYS)
- * 1 - Box of **WIDE** washable Crayola markers
- * 1 - Box of 12 colored pencils (recommend Crayola Twistables)
- * 2 - Highlighters
- * 4 - Low odor dry erase markers
- * 1 - 1-inch heavy duty 3-ring Avery binder with pockets on the inside front and back cover (**NO TRAPPER KEEPERS**)
- * 1 - Set of addition and subtraction flash cards-keep home
- * 2 - Boxes of Kleenex
- * 1 - Roll of paper towels
- * 2 - Containers of Clorox wipes
- * 1 - Bag of individually wrapped pieces of candy or snacks (**NO HARD CANDY**)
- * 1 - Art shirt
- * 1 - Set of headphones in a quart size Ziploc bag

THIRD GRADE

- * 3 - One subject composition books (**black, red, & blue**)
- * 1 - Two subject **SPIRAL** notebook
- * 2 - Boxes of pencils sharpened
- * 3 - Erasers

- * 1 - Pair of scissors
- * 10 - Glue sticks
- * 1 - 12" ruler with **INCHES** and **CENTIMETERS**
- * 2 - Boxes of crayons (no more than 16)
- * 3 - Wide Highlighters
- * 2 - Folders: **1-yellow 1-orange**
- * 1 - Package of wide ruled notebook paper
- * 3 - Large boxes of Kleenex
- * 2 - Containers of Clorox wipes
- * 1 - Supply pouch with three holes for binder
- * 1 - Sturdy binder (**1 1/2"**)
- * 1 - Set each of addition, subtraction, multiplication, and division flashcards to keep at home (optional)
- * 1 - Set of headphones in quart size Ziploc bag with name clearly marked
- * 1 - Roll of paper towels
- * 1 - Blue two pocket folder w/3 holes (for MATH,SCIENCE)
- * 1 - Red two pocket folder w/3 holes (for ELA/SS)
- * 4 - Dry erase markers
- * 1 - Box of gallon Ziploc bags (BOYS)
- * 1 - Box of quart Ziploc bags (GIRLS)

FOURTH GRADE

- * 1 - Box of crayons
- * 1 - Box of colored pencils
- * 1 - Box of markers
- * 2 - Dozen #2 pencils w/eraser
- * 1 - 12 inch ruler w/both inches and centimeters
- * 1 - Flash drive
- * 1 - Zippered pencil pouch for supplies and flash drive
- * 3 - 1" 3-ring binders
- * 2 - 2 pocket folders in different colors (1/homework, 1/computer)
- * 1 - 1 1/2" to 2" Zippered binder
- * 1 - Pair of scissors
- * 2 - Boxes of Kleenex
- * 2 - Packages of wide loose leaf paper
- * 1 - Roll of paper towels
- * 1 - Container of Clorox Wipes
- * Erasers
- * 1 - Elmer's glue bottle
- * 1 - Highlighter
- * 1 - Pair of headphones in quart size Ziploc bag
- * 2 - Black or blue erasable pens

SPECIFIC TEACHER ADDITIONS TO LIST ROTH / THOMS TEAM

- * **1 - Individual pencil sharpener**
- * **2 - 2 pocket folders in different colors (1 for Friday folder & 1 for Science/S. Studies)**

BENNETT/EIBEL/FRENK TEAM

- * **1 - Rubber cement glue bottle**

FIFTH GRADE

- * 5 - Folders with 3 prongs and 2 pockets
 - * 1 red for Math
 - * 1 blue for Science
 - * 1 green for Social Studies
 - * 1 purple for Language Arts
 - * 1 yellow for Computer
- * 1 - Package white wide-ruled notebook paper
- * #2 pencils
- * 1 - Box colored pencils
- * 1 - Box of crayons
- * 1 - Box of washable colored markers
- * 2 - Red pens
- * 1 - Zippered pencil pouch
- * 1 - Pair of scissors

- * 2 - Glue sticks
- * 1 - Ruler (standard and metric on same ruler)
- * 1 - Highlighter
- * 1 - Box of Kleenex
- * 1 - Roll of paper towels

These items are MATH ONLY:

- * 1 - protractor
- * 1 - marble composition book (Scalli and Snyder Classes)
- * 1 - package large Expo low odor dry erase markers
- * 1 - sock (Watson's class)

These items are SCIENCE ONLY:

- * 1 - Blue spiral notebook
- * 1 - 1-1/2" Binder (Mick's class)

These items are Language Arts ONLY:

- 1 - Marble composition book

SIXTH GRADE

- * 2 Three subject notebooks (Social Studies & Science)
- * 5 folders w/3prongs & 2 pockets (Red, Yellow, Green, Blue, Purple)
- * 2 Box of Kleenex
- * 1 composition notebooks (Language Arts)

The following supplies will be required for every 6th grade student & will remain with the student:

- * Headphones or ear-buds
- * 24 colored pencils
- * #2 Pencils
- * Pack of colored highlighters
- * 4 packs Loose-Leaf paper
- * 2- (2 inch) 3-ring binder (Math)(Science)
- * Flash Drive (at least 1 GB)
- * 3-Glue stick
- * Blue or black ink pens
- * Small pouch that closes

SEVENTH GRADE

- * Headphones or ear-buds
- * 4 binders (1 1/2 inch). 1 per subject
- * Loose leaf paper
- * 1 composition notebook
- * #2 Pencils
- * Pens (blue and black)
- * Highlighters (five different colors)
- * Flash drive
- * TI 30 Calculator
- * 24 colored pencils
- * 1 ruler (standard and metric)

The following items are requested donation for shared class use:

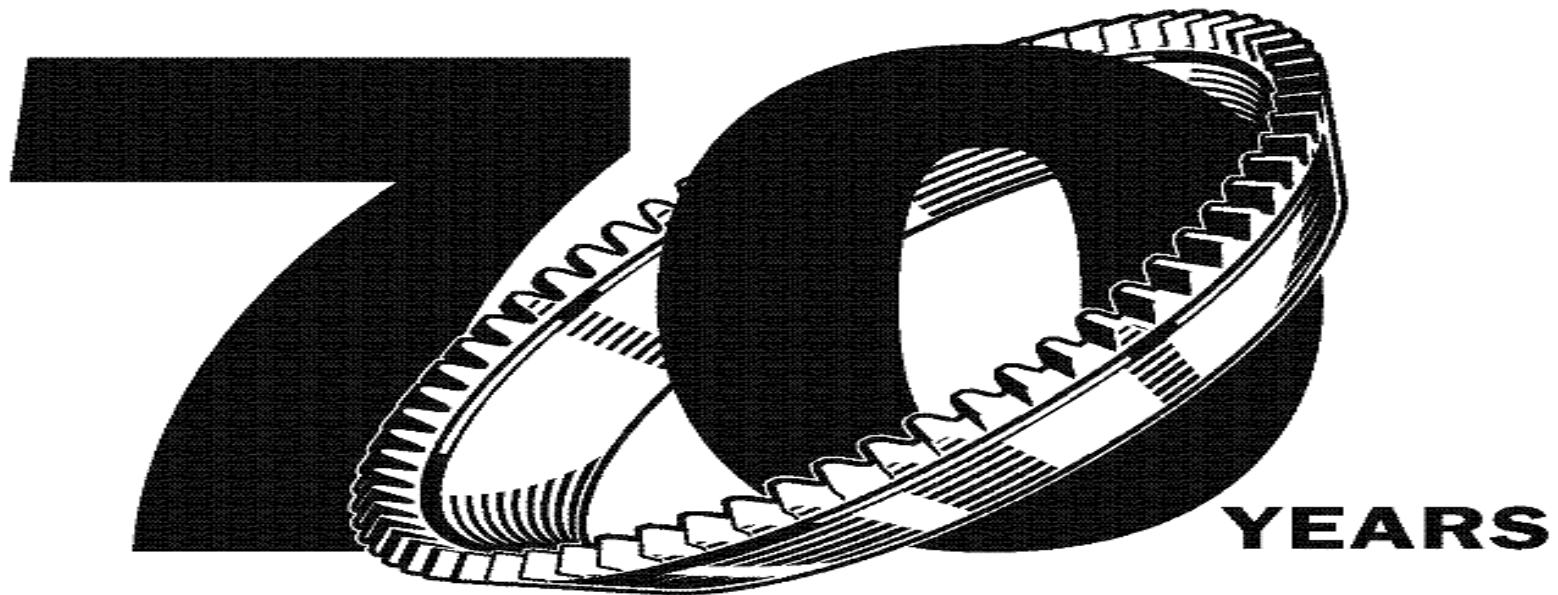
- * 2 boxes Kleenex

EIGHTH GRADE

- * Headphones or ear-buds
- * #2 pencils
- * Loose leaf paper
- * Graph paper
- * 2 single subject spiral notebooks (algebra students)
- * 5 1 1/2 -inch 3 prong binders
- * 4 Composition notebook
- * Black and Blue pens
- * Flash Drive (at least 1GB)
- * TI - 30X IIS calculator for 8th grade Math students
- * TI - 84 graphing calculator for HS Algebra students (optional but recommended)
- * yellow highlighter(s)
- * colored pencils

The following items are requested donation

- * Kleenex
- * 1 Packs of Paper towels
- * 1 container Clorox wipes
- * #2 pencils
- * liquid glue bottle
- * Hand Sanitizer
- * scissors
- * crayons



BETTCHER

Come celebrate Bettcher's 70th Anniversary with guided plant tours, live entertainment and fireworks at dusk. Open to the local Firelands community and businesses in the area.

Saturday, September 20th from 4PM to 8PM

2014-2015 MEAL ASSISTANCE INFORMATION

The 2014-2015 meal assistance form is available on the school website under the food service tab located on the left side of page. Students will also get an updated form in their welcome packet at the start of school. For those students already getting assistance with meals, their meal status will roll over for the first month of school. Their meal status will change to denied as of September 30th if an updated application has not been received. Only 1 application per family is required. If you should receive a letter in August stating that your child has been approved for meal assistance through **DIRECT CERTIFICATION**, you **WILL NOT** need to fill out a new application. For fee waiver, please sign the bottom portion of the direct certification letter and return to the school office. *Kindergarten students are not automatically approved* if you have children already receiving benefits. An updated form must be turned in. If at the start of school you have filled out a new application but have not received an acceptance or denied letter, please notify Judy Baumann-Food Service Director at 440-965-5821 ext. 1011. It may take at least a week for your application to be processed. Applications are processed in the order they are received.

PAY FOR IT PROGRAM

This program will allow you to put money on your child's account, pay school fees as well as provide you with your child's lunch account balance and also a short report of what has been purchased on their account. This can be done by logging onto www.payforit.net, then follow the instructions listed. **There is "no fee" if you only use the reporting system. I encourage everyone to use this free reporting system to see your child's account balance as well as what has been purchased.** If you do use the convenient online payment system to add money, there is a small fee attached. Your child's six digit student ID number is needed to set up a "pay for it" account. You can call Judy Baumann 440-965-5821 ext. 1011 or your child's school office to get this number if you don't have it.

MENUS

The menus will not be published in the express for the start of school this year. Look for a copy in your child's welcome packet as well as on the school website later in August. If you should have any questions please don't hesitate to call Judy Baumann-Food Service Director at 440-965-5821 ext. 1011.

LOW BALANCE AUTOMATED CALL

We have an automated calling system that we use for students at Firelands Elementary and South Amherst Middle School. When your child's balance falls to a -\$1.00, an automated call will be placed to your home announcing this. We appreciate all negative accounts are paid when you have received this phone call.

FOOD SERVICE TAB ON WEBSITE

All food service information can be found on the food service tab located on the school website www.firelandsschools.org. If you have children in multiple schools this tab will be helpful as all menus, meal applications and information for each school will be listed here. The contact information for Judy Baumann, Food Service Director can be found here as well.

FIRELANDS ELEMENTARY

Judy Baumann will be at the open house to speak and answer any questions you may have about the food service department. We will be accepting payment on accounts the evening of conferences if you choose to do so.

Brownhelm Historical Association

The Brownhelm Historical Association will meet at 7:00 p.m. on September 3 at the Carriage Barn at Vermilion Reservation, Mill Hollow. After the business meeting our speaker will be Valerie Smith. She will present a power point about the Sears built houses. We have some in the area. Do you know where any are? Come and find out. It could be your neighbor's house. This free program is open to the public and refreshments will be served after the program. Any questions call Bonnie Cutcher 440-963-7540 or Marilyn Brill 440-988-4550

Our Historical is selling a revised new book, "**Brownhelm -Its School and its People**" for \$20. The new, updated book is revised from the first printing dated 1991 and it contains over 60 or more photos and a lot more information of the classmates that graduated from Brownhelm High School. If interested please call Bonnie Cutcher 440-963-7540 or Marilyn Brill 440-988-4550

Four Leaf Clovers 4-H Club

The Four Leaf Clovers 4-H Club is an established organization geared towards agricultural youth. After meeting monthly for the 2014 year, our group has been very active. In March, the club held officer elections and members were elected to the following positions: President: Chrissy Balint, Vice President: Ali Butler, Secretary: Callie Stevens, and Treasurer: Alexis Lough.

As a way for the club to become active in the community, members put on their marching shoes and walked with pride through the Birmingham Memorial Day parade. Members enjoyed their time throwing candy and walking around the historical Birmingham.

For one of the club's community services, members went to the Second Harvest Food Bank in Lorain. Members donated two hours of their time packaging food that would later be sent out and distributed.

The Four Leaf Clovers came together for an annual picnic in Mill Hollow. With a Disney theme, members dressed up and brought delicious food for everyone. At the meeting, fair booth and stall decorations were discussed along with the upcoming Ag Still Life judging. Jessica Zurcher demonstrated her hobby of geocaching. After a quick meeting, the officers talked about t-shirt designs and played some fun group games.

In August, the group will come together to work on their booth designs and prepare for the Lorain County Fair. Feel free to come and visit us throughout the fair week August 18-24 in Wellington!

David Tipple - Club Reporter

We give
FARMERS CREDIT.

(440) 775-4028 e-farmcredit.com

farmCREDIT
MID-AMERICA

530 South Main Street, Oberlin, OH 44074

Birmingham United Methodist Church
15018 South Street
Birmingham
Church Office - 440-965-4653

"Where we enter to worship, and leave to serve!"

Worship Service: 10:45 AM
Sunday School: 10:45 AM

Deichler's
Tire & Service Center
48487 State Route 113 W.
South Amherst, OH 44001

Phone 440-986-9701

Full Service Automotive Repair
Serving Firelands Since 1953

Firelands Lions Club 

"Serving the Community for over 50 years"

NEW MEMBERS WELCOMED

Meetings are held on the 2nd and 4th Tuesday's

For more information call: Fritz Knoble, Membership Chairman at 440.965.4122

ANNUAL NOTICE ASBESTOS MANAGEMENT PROGRAM

On October 22, 1986, President Reagan signed the Asbestos Hazard Emergency Response Act (AHERA, Public Law 99-519). The act required the Environmental Protection Agency (EPA) to develop regulations for addressing asbestos in public and private elementary and secondary schools. On October 30, 1987, the EPA published the Asbestos-Containing Materials in Schools Rule (40 CFR Part 763 Subpart E). This rule stipulated, and our district has complied with, the following key requirements:

- Identification of asbestos-containing materials in all school buildings.
- Development and implementation of asbestos management plans for each school.
- Regular surveillance and re-inspections of the condition of asbestos in the buildings.
- Designation and training of a person to oversee asbestos activities within the district and to ensure compliance with the regulations.

This memorandum is to advise you that asbestos management plans for the district schools were developed following the EPA ruling. These plans are regularly updated and are available for you to review.

Should you have any questions regarding this program or would like to review an asbestos management plan, please contact the Board of Education offices during normal business hours.

FIRELANDS COMMUNITY DAY SCHOOL
11970 Vermilion Road, Oberlin

440/965-7677
REGISTER NOW!

Fall Pre-School & Summer Programs

Ages: 18 months – 12 years

Pre-School: 9:00am–11:45am

Daycare 6:15am–5:30pm
Monday thru Friday

REALTY BY BAXTER 

(440) 988-8675

8207 Vermilion Rd.
Amherst, OH 44001


Betty L. Baxter
Broker

Since 1977, Satisfied clients are my goal, whether selling or buying. 

Input for Federal Funds

The Firelands Local School District is seeking parental and citizen comment on how to best spend federal funds for special education during the 2014 – 2015 school year. The district will receive funds from the Special Education, Part B-Idea administered through the Division of Exceptional Children, Ohio Department of Education. Persons with suggestions should contact Sue Petz, Special Education Coordinator at 440.965.4255 between 9:00 am and 3:00 pm.

Support the Firelands Board of Education and help us to maintain the Firelands Express!

ADS ARE ONLY \$200 A YEAR!

Contact the Firelands Board Office at 440.965.5821.

Please submit all articles and photos to:
lseman@firelandsschools.org

FIRELANDS LOCAL SCHOOL DISTRICT

FIRST DAY OF SCHOOL

WEDNESDAY, AUGUST 27TH

GRADES 1 - 12



Save The Date!

The Firelands Band Boosters will be hosting their second annual Band on The Run 5K

When? October 19th

Where? Starting point will be South Amherst Middle School

Questions? email: firelands-bandboosters@gmail.com

Attention Members of the Class of 2004:



If you have not received a reunion invite, please contact Jackie (Rotta) Ziegler at (440) 315-5178 or jackieziegler1985@yahoo.com

FIRELANDS FARM, INC.



All natural grain fed freezer beef
Sold by half or quarter
Ron Baumann, Owner
440/653-7189

STERKS CATERING

All Occasion Parties

Reservations:
(440) 967-0028
www.sterks catering.com

YOU'RE BUSY. WE'RE READY.


We're specialists in comparing insurance companies and rates for busy people.

Call Brian Mastellone at **440.984.3463** or visit lighthouseinsuranceamherst.com



AUTO REPAIR & 24 HOUR TOWING LLC.

1979-2014
35 YEARS OF SERVICE
TWO LOCATIONS TO SERVE YOU
8941 LEAVITT RD (440-986-5125)
516 W. MAIN ST (440-986-TOWS)
SOUTH AMHERST, OHIO



POLEN IMPLEMENT JOHN DEERE

Tractors • Mowers • Ag Equipment

Elyria, Ohio (440) 322-8821
Parts • Sales • Service

HOLKENBORG EQUIPMENT CO.

9513 U.S. Hwy. 250 N.
Milan, OH 44846

Toys, Clothing, Gifts, Tractors, Mowers, Gators
419-626-6640

"Your John Deere Destination"
Authorized John Deere Dealer



LIGHTHOUSE INSURANCE AGENCY, LLC

Serving All Your Insurance Needs

Grange Insurance

Matthew A. Stempowski
Firelands Grad 1989

GENERAL FAMILY DENTISTRY
Early morning & evening appointments
New Patients Welcome!
(440) 233-4155
5311 Leavitt Road, Suite 201, Lorain



Liberty Ag Feed & Supply

Tribute Horse Feed • High Noon Show Feeds
Formula of Champions • Premium Pet Foods
Corn Pro Trailers

3655 Liberty Avenue Vermilion, Ohio 44089
440-967-8387
libertyag@centurylink.net

HENRIETTA U.M.C.

"Please! Pray For Our Children & Our Nation"

52148 S.R. 113 (Telegraph Rd)
440-965-7781

Worship Services:
9:00a.m. & 11:00a.m.
Sunday School: 9:45a.m.

Piggy's Main Street Market

Ohio Lottery Headquarters
136 East Main Street
South Amherst
440/986-7482

FOR SALE

The SWANZER AGENCY LLC
Realtors

Call Bill Swanzer,
440-988-3333 or 440-258-4104
for all your Real Estate needs!

100 Wallu, South Amherst

Firelands Board of Education

PRESIDENT:
Jane Battig
440-965-5505

VICE PRESIDENT:
Ben Gibson
440-320-3427

Dwayne Becker
440-965-7850

Mike O'Keefe:
440-670-6469

Dan Pycraft:
440-774-2310

Firelands Local School District

2014-2015 Board Meetings
7:00 p.m.

August 11, 2014
September 8, 2014
October 13, 2014
November 5, 2014
December 8, 2014
January 12, 2015
February 9, 2015
March 9, 2015
April 13, 2015
May 11, 2015
June 8, 2015
July 13, 2015



BETTCHER Industries, Inc.



An Active Member of the Community.

Cedarside Animal Hospital

12220 Gore-Orphanage Road
Wakeman, OH
Phone: 440/965-4660

Jane Bradford-Battig, D.V.M.
Leonard R. Battig, D.V.M.

LARRY'S DRIVING SCHOOL



Driver Education for Teens and Adults
104 North Main Street, Unit B
South Amherst, OH 44001
440-320-4131 or 440-965-5260

Apple Hill



Bulk Food, Spices, Baking Supplies, Candy, Nuts, Dried Fruit, Apples, Bulk Chocolate, Cider. Custom Made Gift & Fruit Baskets

School Tours—Sept. & October
440/965-7077

Great house on a dead end street. Home has been almost completely redone with newer windows, roof, furnace, A/C, & new carpet and hot water tank! Stainless steel appliances stay! You'll take one look and say I found it! \$131,900

51357 Telegraph, Amherst



3 bedroom, 1 bath ranch conveniently located close to Firelands Schools on 1 acre lot. Large 2 car garage / barn out back. Nice decks in both front and back. Full basement. Some hardwood floors. Call Bill today!

For more information, and to see all our listings, go to www.Swanzer.com

The Communities we serve: Amherst, Amherst Township, Birmingham, Brownhelm Township, Camden Township, Florence Township, Henrietta Township, Kipton Village, New Russia Township, South Amherst Village, Vermilion and Vermilion Township.

You may view this issue on line at:
www.firelandsschools.org